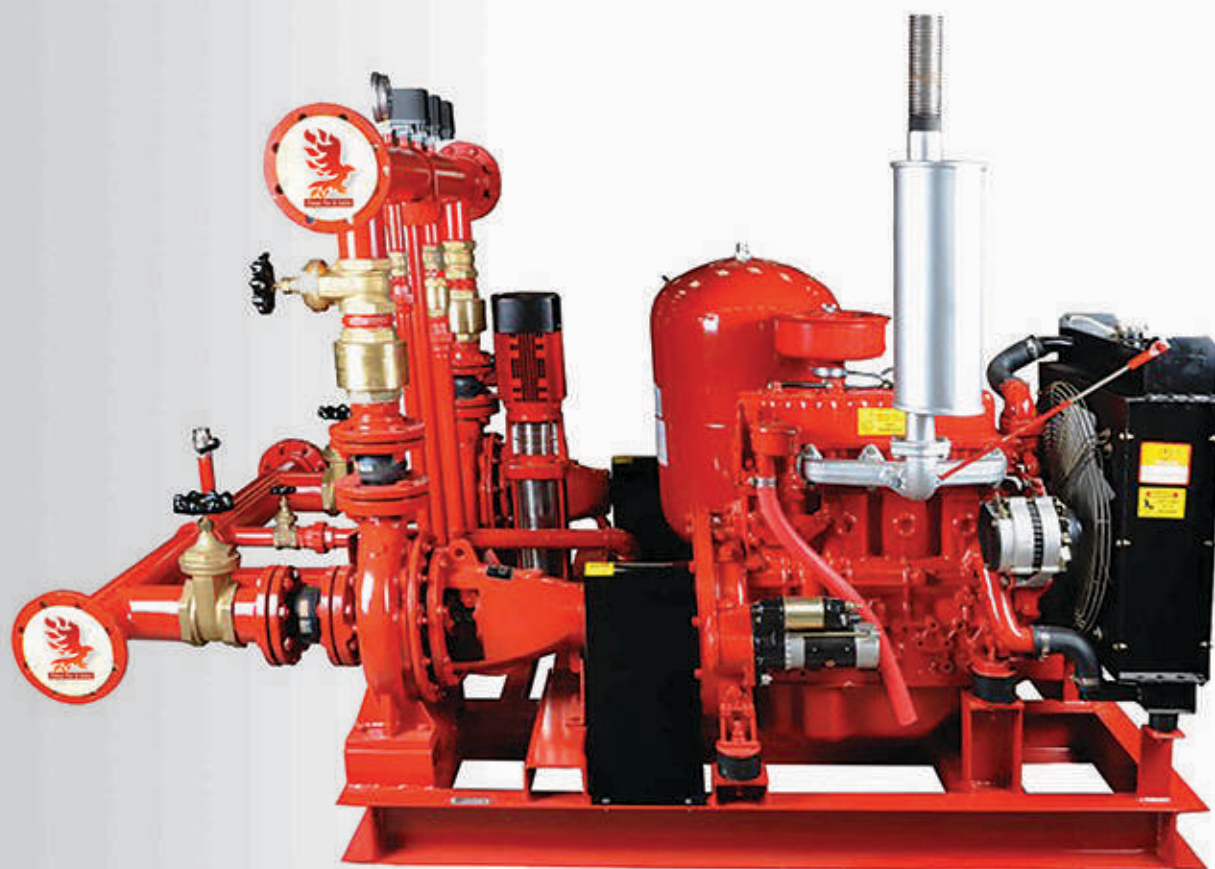




# Fitman Fire & Safety

Ensures Safe Living



**Honeywell**



**olBin®**



# Company Profile

Fitman Materials is one of the leading providers of a variety of building products to builders, contractors, and professional remodelers.

We are a leading distributor and supplier of interior and exterior building development solutions in Pakistan.

## Our Vision:

We strive to meet the needs of customers at every level of the building industry (residential, commercial and industrial) from large architectural accounts to the home remodeler.

## Our Mission:

We aim to become the most attractive distribution partner to our many valued suppliers by forming collaborative relationships built on trust and friendships. We envision a future of constant growth through product and market diversification.

## Scope of work:

Supply the latest products. wide leaders on fire fighting system. surveying studying evaluation of the potential risk and providing the most reliable solutions.

After sales service by our highly technical staff that will provide spare parts with comprehensive maintenance.

## Address:

Fitman Materials - Fire & Safety Solutions  
T-21, Bilal Centre, 9-Nicolson Road, Lahore, Pakistan  
Customer Care: +924236284600  
Mechanical Engineer: +923071272725  
Marketing Executive: +923334662641  
Website: [www.fitmanmaterials.com](http://www.fitmanmaterials.com)  
Email: [sales@fitmanmaterials.com](mailto:sales@fitmanmaterials.com)

## Our Projects



BUCH INTERNATIONAL HOSPITAL  
Multan



TOTAL PARCO REFINERY  
Jhang



GULBERG APARTMENTS  
Lahore

## Suppliers



**NAFFCO**  
PASSION TO PROTECT



**Honeywell**

**outBin®**



intertek







## Services



Fitman Materials fire & safety branch was founded to provide precise technical and engineering solutions to meet the need of fire & safety with the help of our principles, NAFFCO, TIAN GUANG & GENERAL PUMPS in a very short time, which makes us a competent fire fighting services provider in Pakistan.



We also pay special attention to the training of engineers and technicians so we have hired professionals with vast experience of fire & safety division and job portfolio of hundreds of projects.



Fitman Materials is one of the best organization because it provides complete & cost effective solutions to her clients.





## Products



### Description And Operation:

EDJ Type models are basically Electric, Deisel and Jockey pump combinations. They consist of Mainly an End Suction Pump driven by Electric Motor along with a Standby Pump which is a Diesel Engine Driven End Suction Pump. ... The Available EDJ Type Fire Pump Skid Packages are available in the below flow Capacities.

50, 120, 150, 250, 300, 350, 500, 750 & 1000 GPM.



### Description And Operation:

DJ Type models are basically Diesel and Jockey pump combinations. They consist of Mainly an End Suction Pump driven by Diesel Engine and no Standby Pumps. It is also combined with a Jockey Pump for maintenance to make a complete packaged skid.

The Complete DJ Type skid is assembled along with all discharge line accessories and is connected to a Skid Mounted Control Panel.

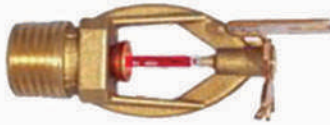
The Available DJ Type Fire Pump Skid Packages are available in the below flow Capacities.

50, 120, 150, 250, 300, 350, 500, 750 & 1000 GPM.



### Description And Operation:

EJ Type models are basically Electric Driven and Jockey pump combinations. They consist of Mainly an End Suction Pump driven by Electric motor and no Standby Pumps. ... The Available EJ Type Fire Pump Skid Packages are available in the below flow Capacities. 50, 120, 150, 250, 300, 350, 500, 750 & 1000 GPM.



**QUICK RESPONSE**  
EXTENDED COVERAGE  
HORIZONTAL SIDEWALL



**QUICK RESPONSE**  
RECESSED  
EXTENDED COVERAGE  
HORIZONTAL SIDEWALL



#### **Description And Operation:**

The Quick Response Model Extended Coverage Extra Large Orifice Pendant Sprinkler for Light Hazard occupancies is a low profile yet durable design which utilizes a 3mm frangible glass ampule as the thermo sensitive element. This provides sprinkler operation approximately six times faster than ordinary sprinklers. The Extended Coverage Light Hazard Quick Response Sprinkler provides an aesthetically pleasing appearance and offers the additional feature of greatly increased safety to life.

#### **Description And Operation:**

The Extended Coverage Light Hazard Quick Response Sprinkler provides an aesthetically pleasing appearance and offers the additional feature of greatly increased safety to life. It can be installed wherever Light hazard extended coverage pendent sprinklers are specified. Quick Response Sprinklers should be used advisedly and under the direction of approving authorities having Jurisdiction and in accordance with their listings.



#### **Description And Operation:**

The Quick Response Series Dry Type Horizontal Sidewall Sprinkler utilizes a 3mm frangible glass ampule as the thermosensitive element. This provides sprinkler operation approximately six times faster than ordinary sprinklers. At the ampule's rated temperature, the sprinkler opens releasing the bulb seat, causing the inner tube assembly to move, allowing the spring assembly to pivot alongside the inner tube. At this time, water flows through the sprinkler and is distributed by the deflector, in an approved discharge pattern. It can be installed wherever standard spray sprinklers are specified but offer the additional feature of greatly increased safety to life.





**Description And Operation:**

The PS-24H can be used in all areas where Photoelectric Smoke Detectors are required. The wide range smoke chamber makes the PS-24H well suited for fires ranging from smoldering to flaming fires. SB Series bases may be used with the PS-24H. Current interchangeable compatible devices are the IS-24 Ionization detector, PS-24 photoelectric detector.



**Description And Operation:**

The Pull Station Series offers a complete line of die-cast pull stations for a variety of applications focusing mainly on fire alarm systems. The pull stations are available in single or dual action models. All of the pull stations have a 10-amp snap action switch and a dedicated terminal block for the ease of wire connections. All of the metal is completely coated to inhibit corrosion and provide for a uniform and quality finish.



**Description And Operation:**

The Extended Coverage Extra Large Orifice Sprinkler for Light Hazard occupancies is a low profile yet durable design which utilizes a 3mm frangible glass ampule as the thermo sensitive element. This provides sprinkler operation approximately six times faster than ordinary sprinklers. The Extended Coverage Light Hazard Quick Response Sprinkler provides an aesthetically pleasing appearance and offers the additional feature of greatly increased safety to life.



**Description And Operation:**

A flexible joint in Automotive Engineering. A flexible joint is a coupling which can transmit torque between two shafts which are not aligned. A flexible joint between the shafts corrects any misalignment. ... Ball joints are the flexible joint between the wheel and axle, allowing movement between the two.



**Description And Operation:**

A flexible joint is a coupling which can transmit torque between two shafts which are not aligned. A flexible joint between the shafts corrects any misalignment. ... Ball joints are the flexible joint between the wheel and axle, allowing movement between the two.



**Description And Operation:**

Fire hose reels are located to provide a reasonably accessible and controlled supply of water to combat a potential fire risk. The length of a fully extended fire hose is 36 meters with a diameter of 19mm (outside diameter). These appliances are designed to deliver, as a minimum, 0.33L of water per second. A control nozzle attached to the end of the hose enables the operator to control the direction and flow of water to the fire. All fire hose reels come with a unique ball valve shut-off device, a plastic or solid brass hose reel nozzle and mounting bracket.



**Description And Operation:**

Fire hose Cotton reels are located to provide a reasonably accessible and controlled supply of water to combat a potential fire risk.

Material	PVC
Hose Color	Red
Lining	With Lining
Diameter	2-4inch





#### Description And Operation:

The Model VS-SP is a vane type water flow switch for use on wet sprinkler systems. These devices may be used as sectional flow indicators on large sprinkler systems and on smaller sprinkler systems such as mobile homes and residential dwellings.



FM 200 System



Fire Hydrant



Two Way Valve



Non Return Valve



Butterfly Valve



Fire Hose Reel



Extinguisher  
CO2



Extinguisher  
Foam



Extinguisher  
DCP



**Description And Operation:**

The lightweight and compact Model 1000 is a 300 PSI rated single-handle ball valve designed to provide both the test and express drain functions required for a wet fire sprinkler system. The Model 1000 inspector's test and drain valve eliminate the multiple connections required by the traditional assembly loop saving time, space, and money.



**Description And Operation:**

Bolted Bonnet • Non-Rising Stem • Resilient Wedge  
• Flanged x Flanged  
250Psi/300Psi/17.2 bar/20.7 bar Non shock cold working pressure  
Confirms to AWWAC509  
Coating-Electrostatically applied fusion bonded epoxy coated 0.2 – 0.5 mm inside and outside.  
Maximum operating temperature 160°F/ 71°C  
Size range 2.5" to 12" - 300 PSI and 12" to 16" - 250 PSI



**Description And Operation:**

Bolted Bonnet • Rising Stem • Resilient Wedge  
• Flanged x Flanged  
250Psi/300Psi/17.2 bar/20.7 bar Non shock cold working pressure  
Confirms to AWWAC509  
Coating-Electrostatically applied fusion bonded epoxy coated 0.2 – 0.5 mm inside and outside.  
Maximum operating temperature 160°F/ 71°C  
Size range 2.5" to 12" - 300 PSI and 12" to 16" – 250 PSI



**Description And Operation:**

The Model VSR is a vane type water flow switch for use on wet sprinkler systems. It is UL Listed and FM Approved for use on steel pipe; schedules 10 through 40, sizes 2" thru 8" (50 mm thru 200 mm) and schedule 5, sizes 2" thru 6". LPC approved sizes are 2" thru 8" (50 mm thru 200 mm).





### Description And Operation:

Alarm Valve is a double seated clapper check valve with grooved seat design, which ensures positive water flow for alarm operation and is designed for installation in a wet pipe sprinkler system. External bypass prevents false alarm under all supply pressure condition. In the event of variable pressure condition, a false alarm is prevented with the provision of the retard chamber, thus the design allows for installation under both variable and constant supply pressure condition.



The wet alarm valve is designed for applications where the water is unlikely to freeze. The water staying pressurized in the pipes is released over the fire area after the sprinkler is activated due to fire. The pressurized water system is not only feeding continuously but also fills in the retard chamber. After the chamber is filled, the pressure switch on the chamber is actuated.

The pressure switch sends the alarm information to the fire warning system or the automation system. After the pressure switch is actuated, the water is delivered to the water-motor gong and releases a mechanical alarm.

Operation of one or more automatic fire sprinklers, the water flows into the sprinkler system and the alarm valve opens, allowing the continuous flow of water into the system and transmittal of alarm, both electrical and mechanical.



**Description And Operation:**

These vibrating type bells are designed for use as fire, burglar or general signaling devices. They have low power consumption and high decibel ratings. The unit mounts on a standard 4" (101mm) square electrical box for indoor use or on a model BBK-1 weatherproof backbox or BBX-1 deep weatherproof backbox for outdoor applications. Weatherproof backbox model BBK-1, Stock No. 1500001.



Seamless Pipe



Fire Hose Cotton Reel - White



Fire Hose Reel Cabinet



Fire Hose Reel Rubber




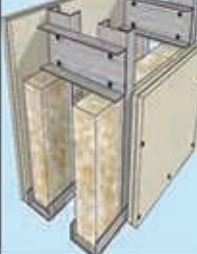


# Fire Rated Drywall Partitions

Fitman Materials offers systems for a large variety of building requirements, all fully complying to ASTM standards.

## SYSTEMS DESIGNED TO MEET BUILDING REQUIREMENTS

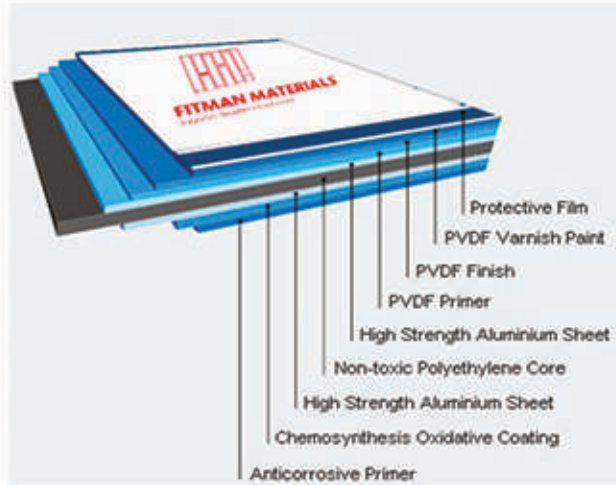
These systems are composed of gypsum boards and metal framing, joint compounds and other materials such as joint tapes, sealants, screws, and insulation. The products alone do not provide performance, the performance is given by the complete assembled system. System performance is achieved on following the correct installation details such as stud spacing and fixing centers, as well as using the nominated components such as gypsum boards, compounds, studs and insulation. The smallest of details such as the sealing of penetrations can have a large effect on the overall system performance.

System	Width	Height	Performance	Fire Resistance	Sound Reduction (RW)
	75 - 176 mm	Up to 8.05 m	<ul style="list-style-type: none"> <li>• Economical solution</li> <li>• Fast space division</li> </ul>		40 - 51 dB
	100 - 206 mm	Up to 9.70 m	<ul style="list-style-type: none"> <li>• Optimum solution meets most design criteria</li> <li>• Small footprint</li> <li>• High fire resistance</li> </ul>	Up to 120 min.	50 - 56 dB
	155 - 249 mm	Up to 6.75 m	<ul style="list-style-type: none"> <li>• High acoustic performances</li> <li>• High fire resistance</li> <li>• Optimum for separation walls</li> </ul>	Up to 120 min.	58 - 63 dB
	300 - 450 mm	Up to 6.95 m	<ul style="list-style-type: none"> <li>• Very good acoustic performance</li> <li>• Accommodates large service runs</li> <li>• High fire resistance</li> <li>• Adjustable footprint</li> </ul>	Up to 120 min	≥ 58 - 64 dB



# Fire Rated Aluminium Composite Panel

Aluminum Composite Panel is compounded with top and bottom layers of aluminum sheet, non-toxic polyethylene core materials. Both surfaces are coil coated with special baking varnish.



● **Standard:**

According to China National Standard GB/T 17748-2008

● **Specification:**

Aluminium sheet thickness:

0.50\*0.50mm 0.40\*0.40mm 0.30\*0.30mm

0.21\*0.21mm 0.15\*0.15mm

Width: 1220mm, 1570mm (Maximum)

Length: 2440mm, upon customer's request.

● **Standard Size:**

1220(Width)\*2440(Length)\*3mm(Thickness) for interior

1220(Width)\*2440(Length)\*4mm(Thickness) for exterior

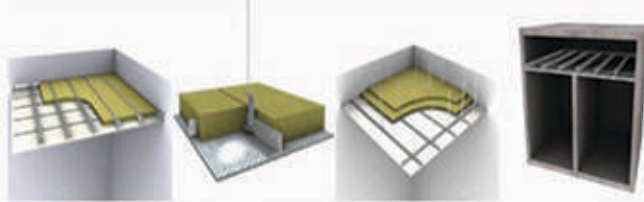
● **Normal Color:**

30 kinds

Non-standard sizes and special colors are available according to customers' request.

# Passive Fire Protection Ceilings

In passive fire protection, a basic fire rated ceiling is defined as a board lining plus any supporting framework, including hangers, fixings and if insulation criteria are needed any non-combustible insulation material. Generally, ceilings are not considered as structural elements, but a finished non-load bearing surface concealing the underside of the roof structure or the floor of a story above.



Ceiling can be continuous lining or tile and grid systems (600 x 600 mm or 600 x 1200 mm) and can be a simple board or a combination of different products (such as a rigid board and mineral wool, etc.).

Essentially, there are many basic types of ceiling used as a part of the fire protection strategy:

## Incombustible or low combustible ceilings

The best classification is "no combustible" (such as A1 according to the Euro class, or similar). The EU classification system for building products according to EN 13501-1 calls for 7 Euroclass classifications (A1, A2, and B through F), based on various test and a so-called reference scenario.

## Suspended ceilings

These ceilings, called "horizontal protective membrane", have the ability to contribute to the fire resistance of horizontal structural building members up to 1 hour, 2 hours or more. More specifically, the fire resistance of the loadbearing element protected by the ceiling can be classified based on the temperature within the cavity or on the element itself (in Europe the test standard is EN 13381-1).

## Independent ceiling

The ceiling is defined as a "non-loadbearing element of a building construction designed to provide horizontal fire separation". The ceiling has a stand-alone fire-resistance rating and is used to provide protection from fire attack from below and/or above. In other words, these ceilings possess intrinsic fire resistance, independent of any building element above them. The ceilings can be either suspended by hangers or fixed directly to a supporting frame/ construction or be self-supporting ceilings.

The systems (ceiling + suspending /fixing components) are required to provide stability and integrity and if needed an insulation performance, independent from the supporting floor construction. These types of ceilings are tested according to BS 476:1987 part 22.





**Fitman Fire & Safety**  
Ensures Safe Living



Government of Pakistan  
**Federal Board of Revenue**  
Inland Revenue Services

## TAXPAYER REGISTRATION CERTIFICATE

(Under Section 181C of the Income Tax Ordinance 2001)

Registration No. 3450156841947



3450156841947

Date of Registration 01-Feb-2018

Type of Person Individual

Name USMAN IMDAD KHAN

Address SHOP # LG 22 BILAL CENTER,, 9 NICHOLSON ROAD, LAHORE, Lahore Data Gunj Bukhsh Town

Tax Office RTO-II LAHORE

Activity Type Business

Inland Revenue Service

This is a computer generated certificate and,  
hence, no signatures are required.

Displaying of Taxpayer Registration Certificate is mandatory as  
provided under section 181C of Income Tax Ordinance 2001.

This is not a valid evidence of being a "filer" for the purposes of clauses (23A) and (35C)  
of sections 2 and 181A of the Income Tax Ordinance 2001.



Date of Print 07-Mar-2019

PARTNER IN PROGRESS

051 111 772 772

helpline@fbr.gov.pk www.fbr.gov.pk



intertek



0086





**Fitman Fire & Safety**

Ensures Safe Living

## Safety Signs







**Fitman Fire & Safety**

Ensures Safe Living

## Work Site Safety



## Road Site Safety



intertek





NTN: 7937213-5  
STRN: 3277876155168

## **FITMAN MATERIALS**

Importer-Suppliers-Contractor



+92 42 36284600, +92 300 0433318  
+92 307 1272725, +92 333 4662641



T-21, Bilal Center, 9 Nicholson Road, Lahore- Pakistan



info@fitmanmaterials.com, sales@fitmanmaterials.com



www.fitmanmaterials.com

